



ALUFORM goes green: Invest and build with a Sense of Responsibility for the Future

Sustainability, credibility and honesty at companies affect people and the natural world, more than ever now. So protecting the environment is part of our corporate philosophy. We can only maintain a world where life is worth living for the generations of tomorrow if we act responsibly now. ALUFORM is committed to this long-term perspective.

Green thinking and a pro-active approach - ALUFORM invests in the future

1. ALUFORM manufactures its products by paying the greatest possible attention to the environment and is constantly working on improving its manufacturing technologies.

2. The facade covering for a new production facility at the Bernsdorf business site consists of aluminium sandwich elements and meets all the requirements laid down in the German Energy Conservation Regulations for Buildings 2009.

3. The use of standing seam systems with unformed silicon thin-layer laminates on a roof measuring 3,200 m² means that solar energy is used efficiently.

4. The installed ALU SOLAR photovoltaic panel roof system feeds energy into the grid and saves the company 100,000 kWh per annum.

5. Approx. 85 % of the heat required by the factory is produced by a newly constructed biogas combined heat and power plant. This enables ALUFORM to reduce its CO₂ emissions by 500 tonnes per annum.

Ecological building plus generating renewable energy

6. ALUFORM products are environmentally-friendly and are 100 % recyclable at the end of their useful life.

7. Approx. 95 % of energy is saved by recycling aluminium.

8. ALUFORM products and their long serviceable life support sustainable building for industry, offices and residential property.

9. ALUFORM products, like roof-integrated solar power solutions, are an ingenious combination for building in an environmentally-friendly way and saving resources.

10. As a responsible partner for architects, planners and installation companies, ALUFORM represents forward-looking building.

“Building for the future” - creatively and sustainably with ALUFORM products

Sustainable thinking in architecture and the building industry is a milestone towards acting in a responsible manner. ALUFORM products provide architects and planners with creative space for modern architecture design and environmentally-friendly, energy solutions.



Cassette profiles of types EASY, EASY XL and REVERSIBLE, bended on one or two face ends, extend the fields of application of the tried and tested ALUFORM long-span cladding panel

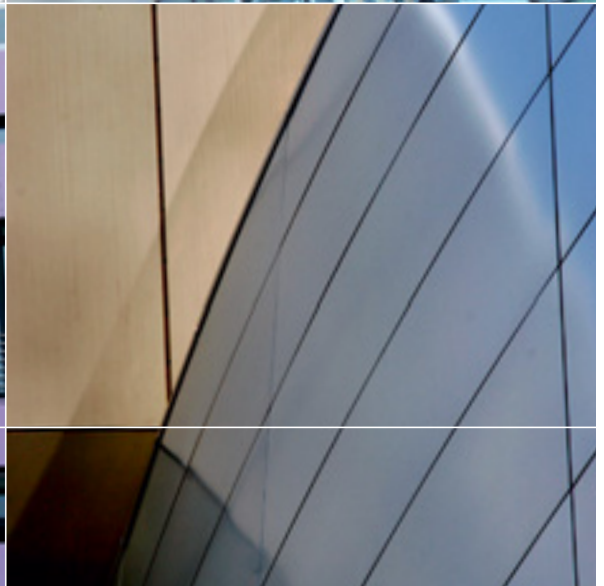
ALUFORM offer new technical alternatives in cladding façades with aluminium cassette profiles. The company invested in a new production plant permitting the ALUFORM long-span cladding panel, proven for many years, to be extended by a number of innovative cassette forms.

As a new feature, the standard long-span cladding panel can now be provided with face end bendings on one or both sides. Under the names of EASY, EASY XL and REVERSIBLE, the new, bent cassettes are made of coil-coated aluminium sheets 1.5 to 3.0 mm thick.

Depending on the cassette type and sheet thickness, cover widths of up to 1,000 mm are possible.

Additionally, there is the possibility of using two more systems - the so-called hook-bolt cassettes which can be produced from coated aluminium sheets of a thickness of 2.0 to 3.0 mm.

Aluminium cassette profiles give architecturally distinctive building façades a long lasting shell



Cover widths up to 1,000 mm are possible. The cassettes are mounted using conventional, visible system substructures such as suspension bolts or holding slots. Special profile systems also permit a concealed mounting to be implemented.

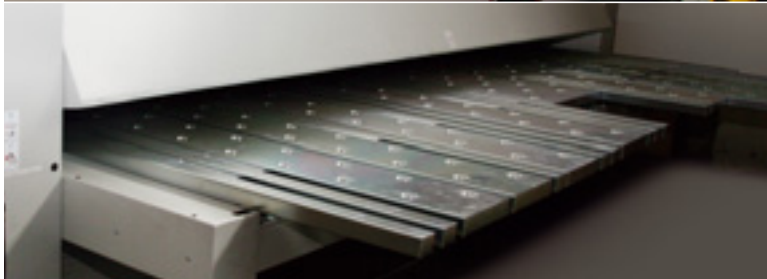
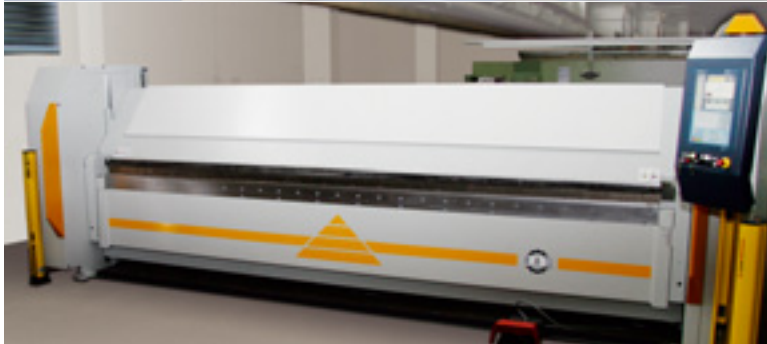
The coating system used for panel thicknesses from 1.5 mm to 3.0 mm is coil coating. Panels of a thickness of 3.0 mm can also be powder coated.

The new cassette profiles give building façades an architecturally interesting, impressive, extremely durable, straightforward and weather-resistant cladding. If the customer so desires, the optical attractiveness can be enhanced in many ways by choosing from a wide range of colours and shapes. All this allows ALUFORM cassette profiles to be used for an extremely broad spectrum of applications.

The new cassette profiles feature a great number of advantages in terms of material and processing:

- low weight
- very good workability
- intensive heat emission at high temperatures
- very good corrosion resistance
- non-combustibility (A1)
- maintenance-free over long periods of time
- flexible façade design in colour and shape, and
- great cover width in combination with flat faces.

ALUFORM uses advanced production plants to produce state-of-the-art cassette profiles for attractive and sustained building



ALUFORM cassettes of the newest types offer planners, installers and builders much freedom in designing wall claddings and for architectural variations. The cassette spectrum includes perforated aluminium profiles which extends even further the design possibilities.

Before the ALUFORM cassettes are installed, the walls to be cladded can be provided with thermal insulation material, which is an opportunity not only to consider architectural aspects but also to achieve energy saving effects.

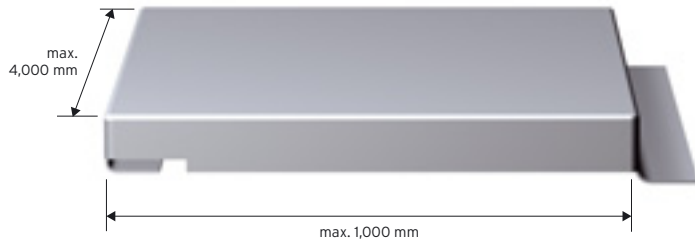
Independent of the time of year, ALUFORM cassettes are installed fast, simply and cost saving on industrial, municipal and residential buildings. Thanks to the fact that the material is durable and 100 per cent recyclable, this new ALUFORM product range guarantees sustained and very attractive building.

Do not hesitate to contact our ALUFORM advisors if you wish to know more about the advantages of this modern and versatile product, which is the ideal choice

when it comes to making attractive and extremely low-maintenance aluminium façades. Discover now our new ALUFORM cassette profiles and their extraordinary and universal applicability in creating an innovative architectural design!

Cassette profiles
EASY, EASY XL and REVERSIBLE

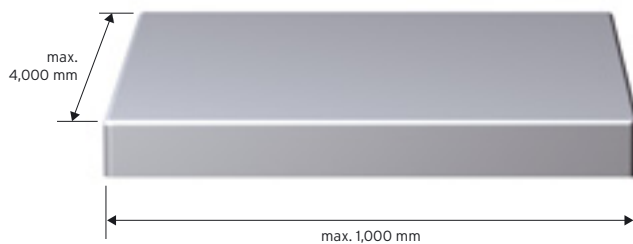
Aluform cassette type **EASY**



Max. length (mm)	Max. cover width (mm)	Sheet thickness t_N (mm)
4,000	500	1.5
	750	2.0
	1,000	3.0

- Concealed fixing using stainless steel brackets on substructure
- Especially suitable for horizontal installation
- Sheet thickness 1.5 - 2.0 mm, coil-coated material
- Sheet thickness 3.0 mm, coil-coated or powder-coated
- Cover widths up to 1,000 mm
- Low-cost variant

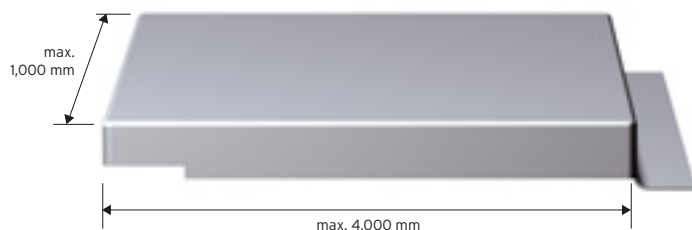
Aluform cassette type **EASY XL**



Max. length (mm)	Max. cover width (mm)	Sheet thickness t_N (mm)
4,000	500	1.5
	750	2.0
	1,000	3.0

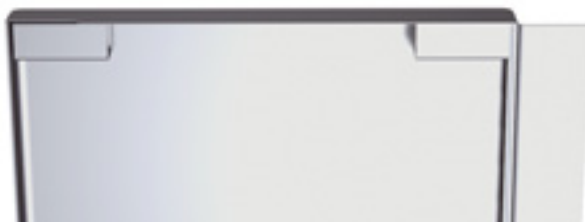
- Cassette is installed on special supporting profiles
- Cassettes can be installed in a staggered manner (brick appearance)
- Joint pattern is free to choose, giving the planner much freedom in designing the façade
- Longer spans are possible
- Horizontal and vertical installation
- Sheet thickness 1.5 - 2.0 mm, coil-coated material
- Sheet thickness 3.0 mm, coil-coated or powder-coated
- Cover widths up to 1,000 mm

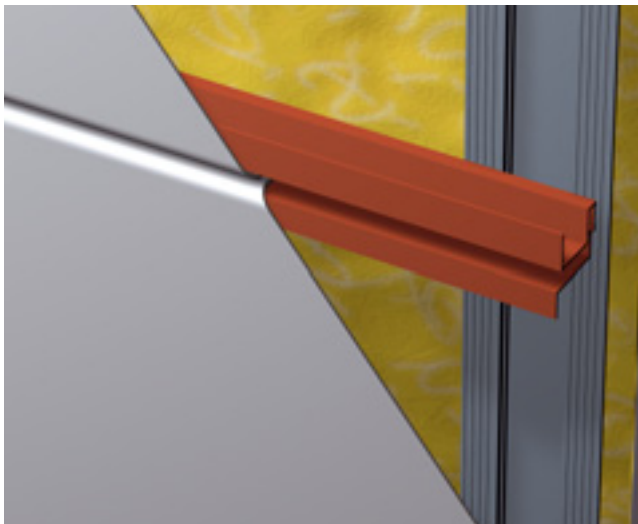
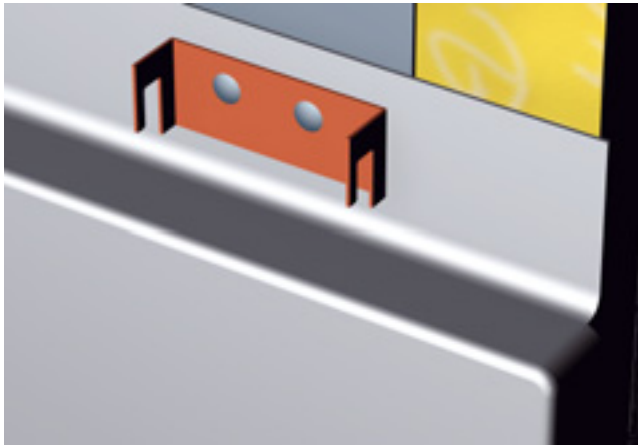
Aluform cassette type **REVERSIBLE**



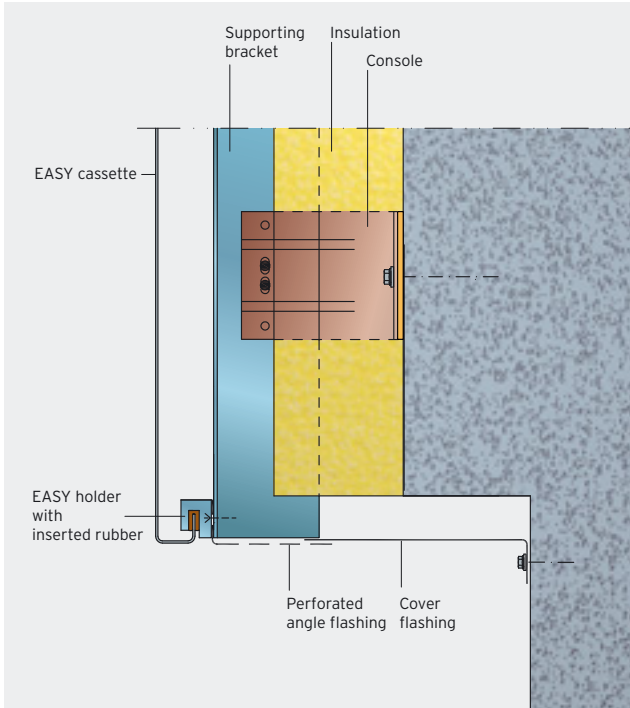
Max. length (mm)	Max. cover width (mm)	Sheet thickness t_N (mm)
4,000	500	1.5
	750	2.0
	1,000	3.0

- Cassette is fixed using individually adjustable suspension means
- Possibility to replace individual cassettes
- Possibility to open façade for inspections without removing major parts of the façade
- Vertical installation
- Sheet thickness 1.5 - 2.0 mm (coil-coated material)
- Sheet thickness 3.0 mm, coil-coated or powder-coated
- Cover widths up to 1,000 mm

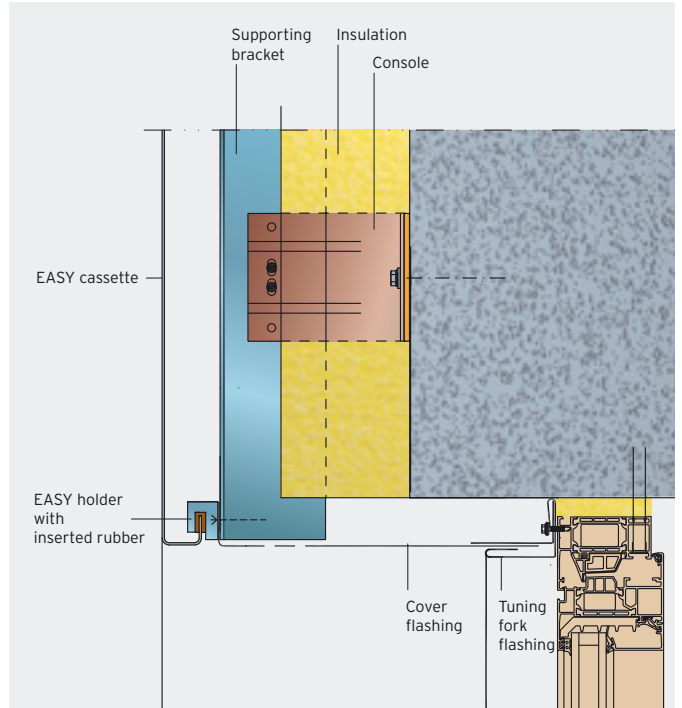




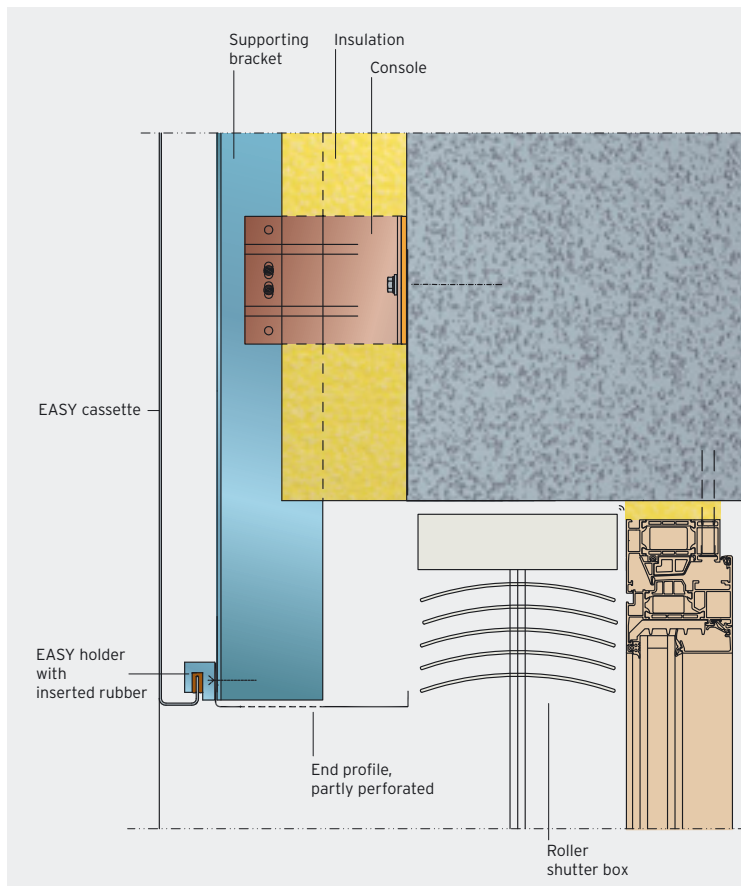
Lower façade end



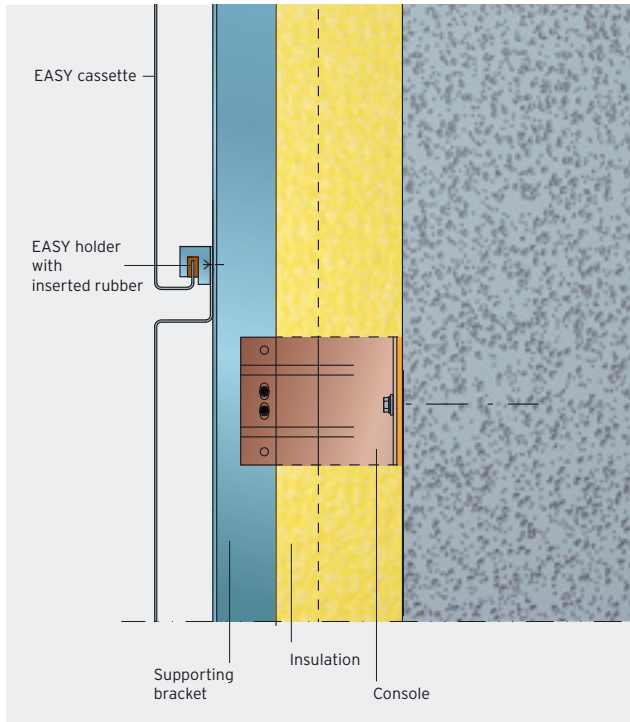
Detail, window, upper part



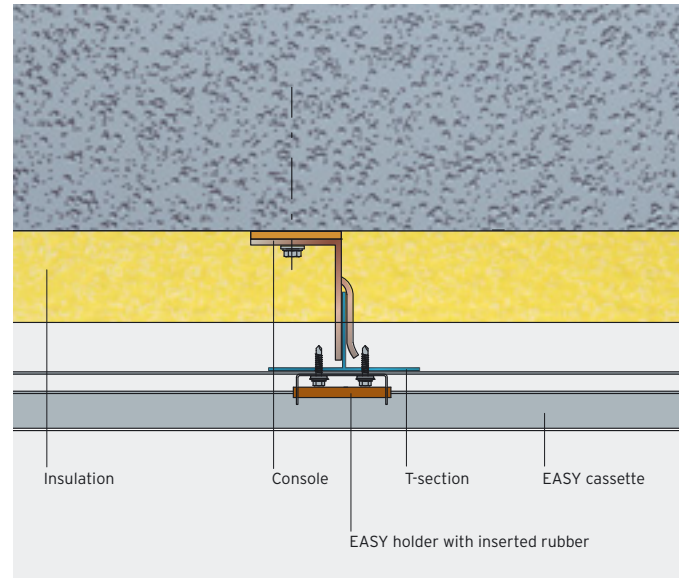
Detail, window with roller shutter



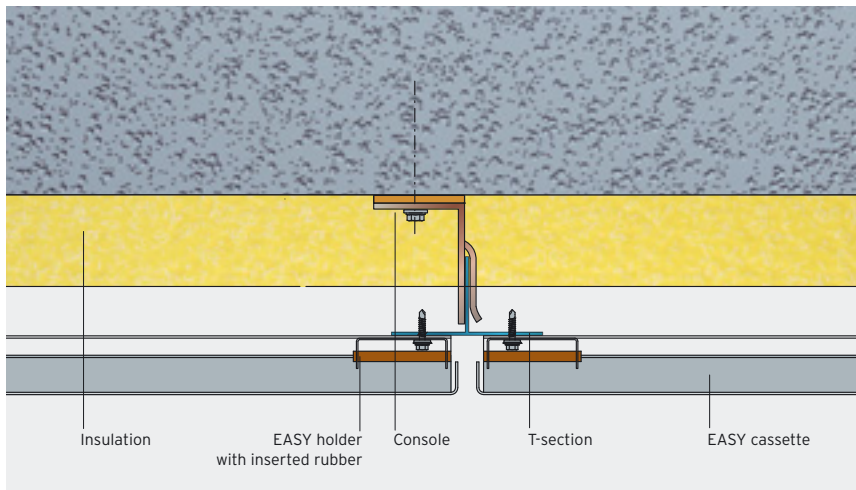
Horizontal joint



Intermediate fixing element

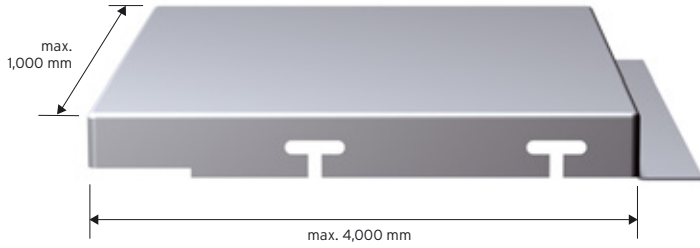


Joint fixing element



Aluform cassette type
PRO - V and PRO - C

Aluform cassette type **PRO - V** (visible hook-in points)

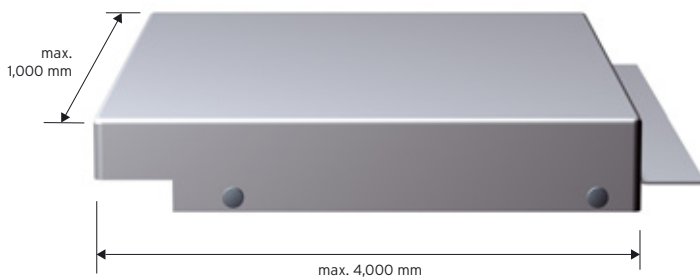


Max. length (mm)	Max. cover width (mm)	Sheet thickness t_N (mm)
4,000	750	2.0
	1,000	3.0*

* coil-coated or powder-coated



Aluform cassette type **PRO - C** (concealed hook-in points)



Max. length (mm)	Max. cover width (mm)	Sheet thickness t_N (mm)
4,000	750	2.0
	1,000	3.0*

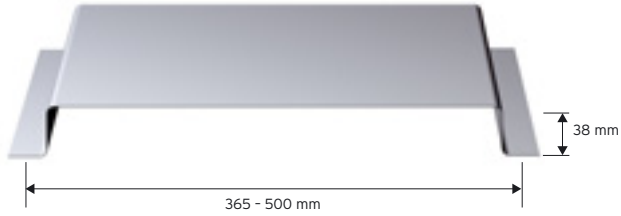
* coil-coated or powder-coated



Long-span cladding panel with and without bent edges

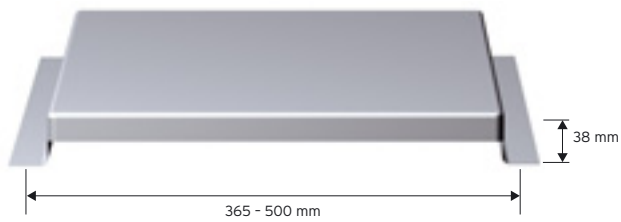


Aluform long-span cladding panel



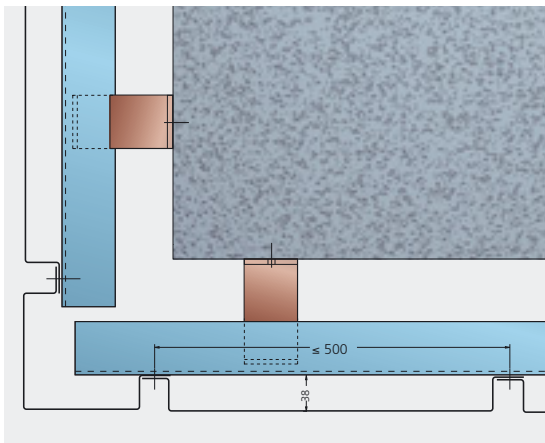
Cover height (mm)	Cover width (mm)	Sheet thickness t_N (mm)
38	365 - 500	1.50

Aluform long-span cladding panel with bent edges

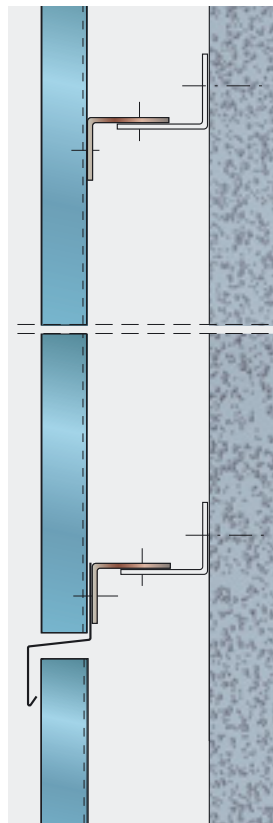


Cover height (mm)	Cover width (mm)	Sheet thickness t_N (mm)
38	365 - 500	1.50

Outer corner



Wall mounting system



Window connection

